

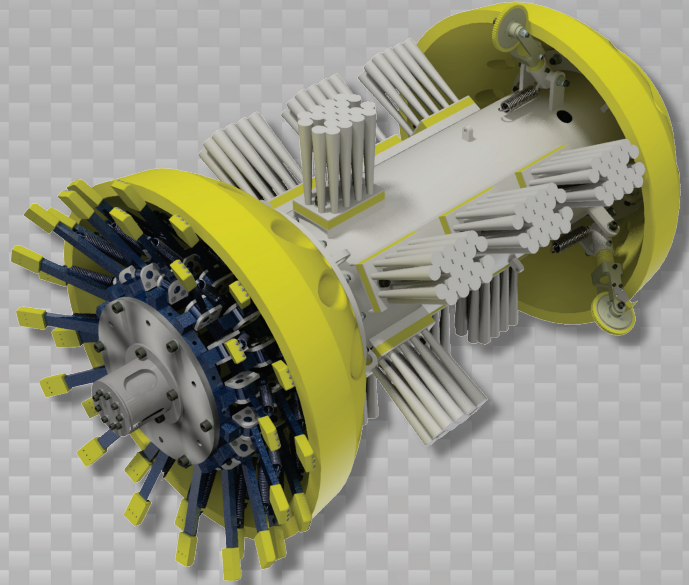


Data Sets (No. of Sensors)

Caliper	30
Spacing: ≤1.5 in (38 mm) in 0.25 in (6.4 mm) WT	
Odometer	2

Physical Attributes

Length	57 in (1448 mm)
Weight	573 lb (260 kg)



Operational

Maximum Pressure	1500 psi (10342 kPa)
Temperature Range	32° to 140°F (0° to 60°C)
¹ Velocity (Preferred)	0.1 to 9 mph (0.04 to 4 m/s)
Minimum Required Diff. Pressure (Launching)	20 psi (138 kPa)
Minimum Required Diff. Pressure (Running)	15 psi (103 kPa)

Pipeline Geometry Requirements

Minimum Cross Section Diameter	22.50 in (572 mm)
Minimum Bend Radius	1.5D
Minimum Bend Separation (1.5D Bends)	Back to Back
Minimum Tee Separation (Centerline to Centerline)	75 in (1905 mm)

Reporting

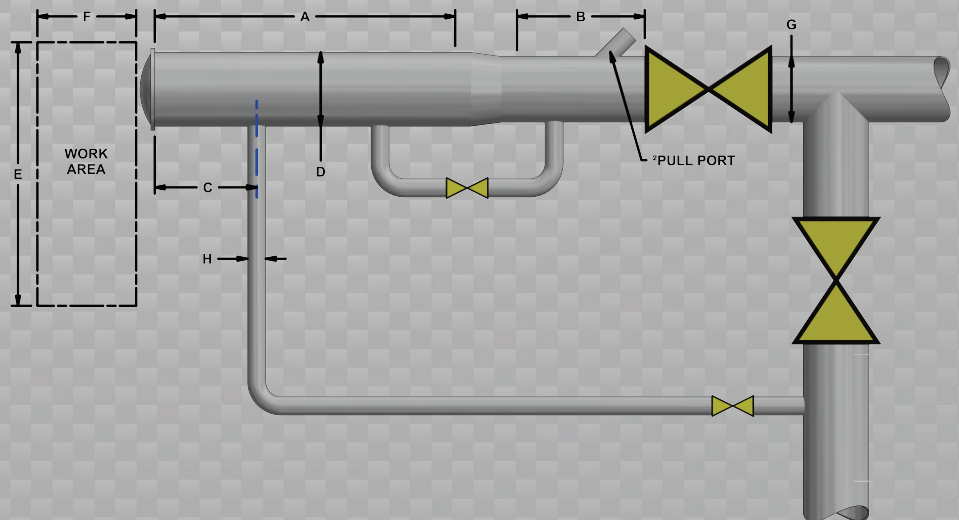
Dent/Ovality Sizing	
Dent Depth Sizing	0.15 in (3.8 mm)
Ovality ID Reduction Accuracy	0.15 in (3.8 mm)
Location Accuracy	
Feature to Upstream Girth Weld Feature Orientation	±1 in (25 mm) ±15°
Bend Data	
Angle Accuracy	±2°
Axial Sampling	
Depends on Speed, Line Condition & Length	0.1 in (2.5 mm)

Suggested Minimum Trap Dimensions (Contact Enduro For Minimum DdL-Combo Trap Dimensions)

Traps	A	B	C	D	E	F	G	H
Launcher	69 in (1753 mm)	29 in (737 mm)	18 in (457 mm)	32 in (813 mm)	78 in (1981 mm)	129 in (3277 mm)	30 in (762 mm)	8 in (203 mm)
Receiver	69 in (1753 mm)	69 in (1753 mm)	18 in (457 mm)	32 in (813 mm)	78 in (1981 mm)	129 in (3277 mm)	30 in (762 mm)	8 in (203 mm)

Notes

- Data quality and run success is dependent on tool speed & line conditions
- Pipelines that are outside of the scope of these specifications can be assessed on an individual basis
- Tool design may vary from image above
- ¹Optional Dynamic Speed Control available
- ²Contact Enduro for details



30" DdL-DW