

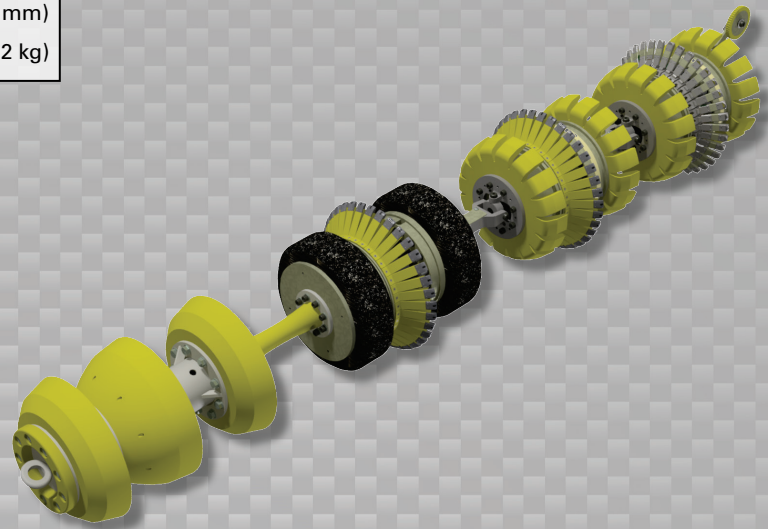


Data Sets (No. of Sensors)

Metal Loss	72
Residual	72
Caliper	36
Odometer	2

Physical Attributes

Length	77 in (1956 mm)
Weight	268 lb (122 kg)



Operational

Maximum Pressure	1500 psi (10342 kPa)
Temperature Range	32° to 140°F (0° to 60°C)
Velocity (Preferred)	0.1 to 9 mph (0.04 to 4 m/s)
Minimum Required Diff. Pressure (Launching)	60 psi (414 kPa)
Minimum Required Diff. Pressure (Running)	50 psi (345 kPa)

Pipeline Geometry Requirements

Local Min. Cross Section Diameter	8.60 in (218 mm)
¹ Feature Bore Restriction Diameter	9.25 in (235 mm)
Minimum Bend Radius	1.5D
Minimum Bend Separation (1.5D Bends)	6 in (152 mm)
Minimum Tee Separation (Centerline to Centerline)	30 in (762 mm)
Maximum Recordable Wall Thickness [[@] 9 mph (4 m/s)]	0.63 in (16 mm)

Reporting

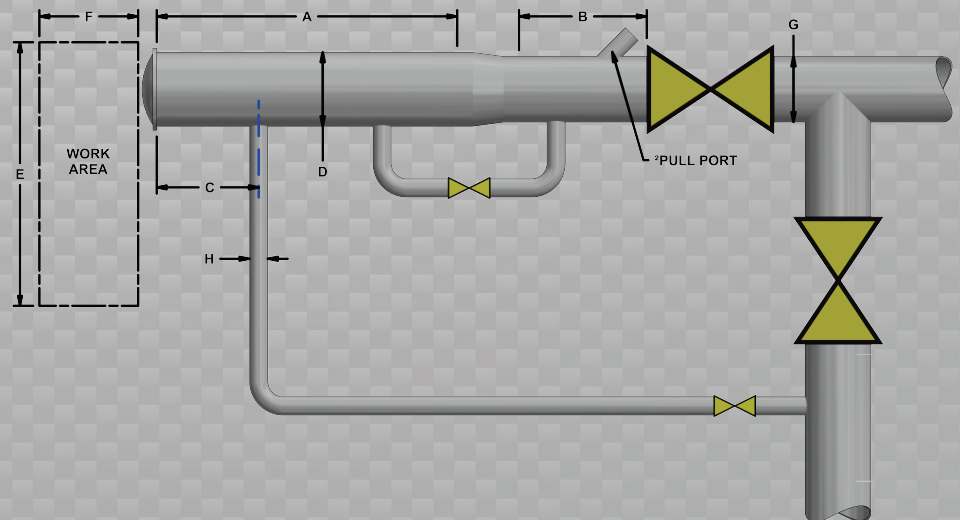
Metal Loss	Refer to Tool Performance Specification
Geometry Data	
Reporting Threshold	0.5% of Pipe OD (0.05 in/1.4 mm)
Sizing Accuracy (Depth)	0.05 in (1.4 mm)
Location Accuracy	
Axial	±1 in (25 mm) within a joint
Circumferential	±10°
Bend Data	
Angle Accuracy	±2°

Suggested Minimum Trap Dimensions

Traps	A	B	C	D	E	F	G	H
Launcher	89 in (2261 mm)	39 in (991 mm)	18 in (457 mm)	12 in (305 mm)	58 in (1473 mm)	149 in (3785 mm)	10 in (254 mm)	4 in (102 mm)
Receiver	89 in (2261 mm)	89 in (2261 mm)	18 in (457 mm)	12 in (305 mm)	58 in (1473 mm)	149 in (3785 mm)	10 in (254 mm)	4 in (102 mm)

Notes

- Data quality and run success is dependent on tool speed & line conditions
- Pipelines that are outside of the scope of these specifications can be assessed on an individual basis
- Tool design may vary from image above
- ¹Contact Enduro for options if MCSD is less than shown above
- ²Contact Enduro for details



10" DfL-Combo