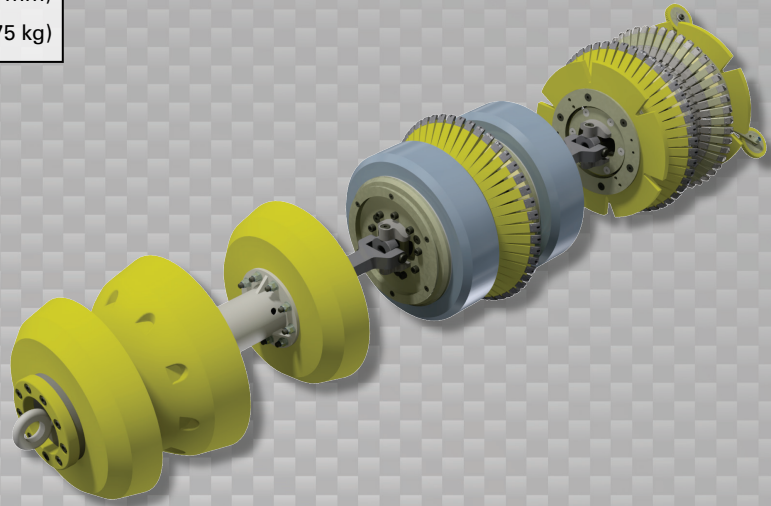


Data Sets (No. of Sensors)

Metal Loss	96
Residual	96
Caliper	48
Odometer	2

Physical Attributes

Length	76 in (1930 mm)
Weight	386 lb (175 kg)



Operational

Maximum Pressure	1500 psi (10342 kPa)
Temperature Range	32° to 140°F (0° to 60°C)
Velocity (Preferred)	0.1 to 9 mph (0.04 to 4 m/s)
Minimum Required Diff. Pressure (Launching)	50 psi (345 kPa)
Minimum Required Diff. Pressure (Running)	40 psi (276 kPa)

Pipeline Geometry Requirements

Local Min. Cross Section Diameter	11.20 in (285 mm)
Feature Bore Restriction Diameter	12.20 in (310 mm)
Minimum Bend Radius	1.5D
Minimum Bend Separation (1.5D Bends)	5 in (127 mm)
Minimum Tee Separation (Centerline to Centerline)	32 in (813 mm)
Maximum Recordable Wall Thickness [@ 9 mph (4 m/s)]	0.69 in (18 mm)

Reporting

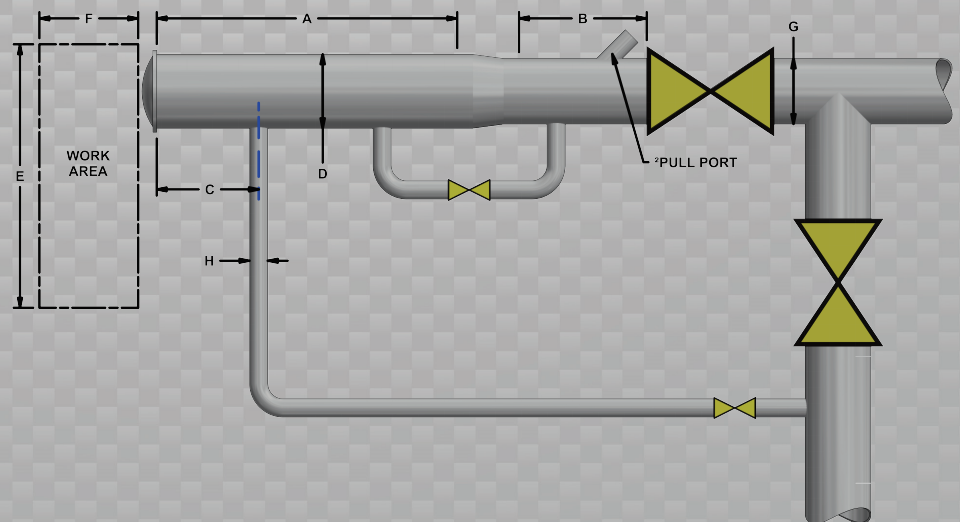
Metal Loss	Refer to Tool Performance Specification
Geometry Data	
Reporting Threshold	0.5% of Pipe OD (0.07 in/1.8 mm)
Sizing Accuracy (Depth)	0.07 in (1.8 mm)
Location Accuracy	
Axial	±1 in (25 mm) within a joint
Circumferential	±10°
Bend Data	
Angle Accuracy	±2°

Suggested Minimum Trap Dimensions

Traps	A	B	C	D	E	F	G	H
Launcher	88 in (2235 mm)	38 in (965 mm)	18 in (457 mm)	16 in (406 mm)	62 in (1575 mm)	148 in (3759 mm)	14 in (356 mm)	4 in (102 mm)
Receiver	88 in (2235 mm)	88 in (2235 mm)	18 in (457 mm)	16 in (406 mm)	62 in (1575 mm)	148 in (3759 mm)	14 in (356 mm)	4 in (102 mm)

Notes

- Data quality and run success is dependent on tool speed & line conditions
- Pipelines that are outside of the scope of these specifications can be assessed on an individual basis
- Tool design may vary from image above
- ²Contact Enduro for details



14" DfL-Combo