

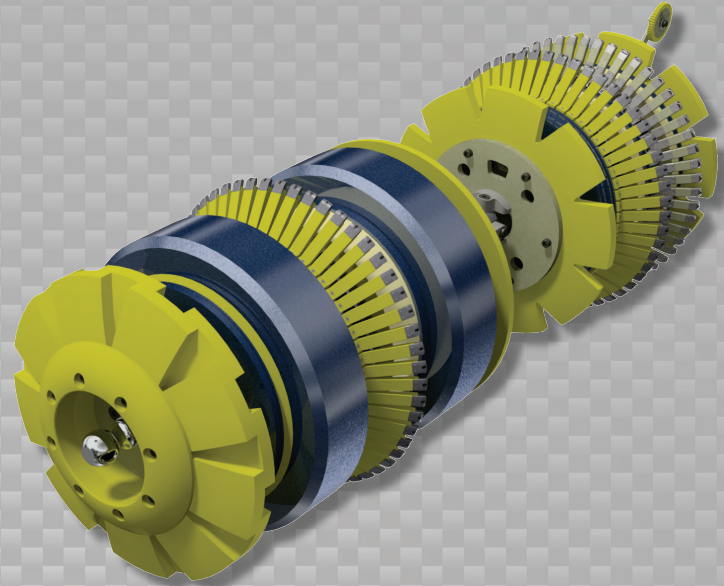


**Data Sets (No. of Sensors)**

Metal Loss	108
Residual	108
Caliper	54
Odometer	2

**Physical Attributes**

Length	60 in (1524 mm)
Weight	548 lb (249 kg)



**Operational**

Maximum Pressure	1500 psi (10342 kPa)
Temperature Range	32° to 140°F (0° to 60°C)
Velocity (Preferred)	0.1 to 9 mph (0.04 to 4 m/s)
Minimum Required Diff. Pressure (Launching)	40 psi (276 kPa)
Minimum Required Diff. Pressure (Running)	30 psi (207 kPa)

**Pipeline Geometry Requirements**

Local Min. Cross Section Diameter	14.25 in (362 mm)
Feature Bore Restriction Diameter	16.25 in (413 mm)
Minimum Bend Radius	1.5D
Minimum Bend Separation (1.5D Bends)	9 in (229 mm)
Minimum Tee Separation (Centerline to Centerline)	45 in (1143 mm)
Maximum Recordable Wall Thickness [ @ 9 mph (4 m/s) ]	0.75 in (19 mm)

**Reporting**

<b>Metal Loss</b>	Refer to Tool Performance Specification
<b>Geometry Data</b>	
Reporting Threshold	0.5% of Pipe OD (0.09 in/2.3 mm)
Sizing Accuracy (Depth)	0.09 in (2.3 mm)
<b>Location Accuracy</b>	
Axial	±1 in (25 mm) within a joint
Circumferential	±10°
<b>Bend Data</b>	
Angle Accuracy	±2°

**Suggested Minimum Trap Dimensions**

Traps	A	B	C	D	E	F	G	H
<b>Launcher</b>	72 in (1829 mm)	30 in (762 mm)	18 in (457 mm)	20 in (508 mm)	66 in (1676 mm)	132 in (3353 mm)	18 in (457 mm)	6 in (152 mm)
<b>Receiver</b>	72 in (1829 mm)	72 in (1829 mm)	18 in (457 mm)	20 in (508 mm)	66 in (1676 mm)	132 in (3353 mm)	18 in (457 mm)	6 in (152 mm)

**Notes**

- Data quality and run success is dependent on tool speed & line conditions
- Pipelines that are outside of the scope of these specifications can be assessed on an individual basis
- Tool design may vary from image above
- <sup>2</sup>Contact Enduro for details

