

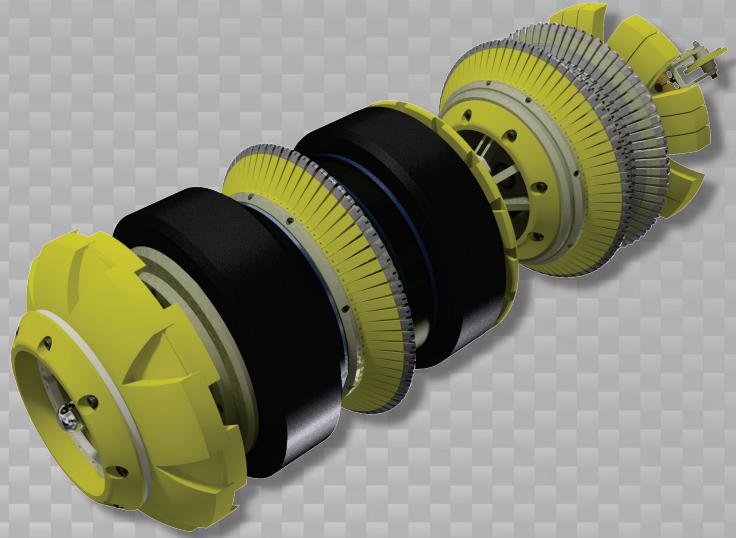


**Data Sets (No. of Sensors)**

Metal Loss	144
Residual	144
Caliper	72
Odometer	2

**Physical Attributes**

Length	61 in (1549 mm)
Weight	811 lb (368 kg)



**Operational**

Maximum Pressure	1500 psi (10342 kPa)
Temperature Range	32° to 140°F (0° to 60°C)
<sup>1</sup> Velocity (Preferred)	0.1 to 9 mph (0.04 to 4 m/s)
Minimum Required Diff. Pressure (Launching)	25 psi (172 kPa)
Minimum Required Diff. Pressure (Running)	20 psi (138 kPa)

**Pipeline Geometry Requirements**

Local Min. Cross Section Diameter	16.40 in (417 mm)
<sup>3</sup> Feature Bore Restriction Diameter	18.00 in (457 mm)
Minimum Bend Radius	1.5D
Minimum Bend Separation (1.5D Bends)	10 in (254 mm)
Minimum Tee Separation (Centerline to Centerline)	50 in (1270 mm)
Maximum Recordable Wall Thickness [ <sup>@</sup> 9 mph (4 m/s)]	0.75 in (19 mm)

**Reporting**

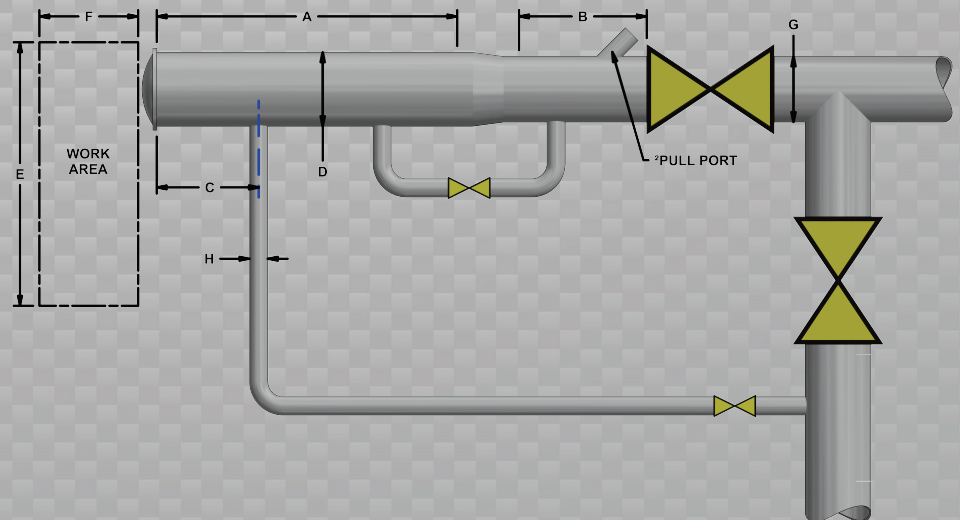
<b>Metal Loss</b>	Refer to Tool Performance Specification
<b>Geometry Data</b>	
Reporting Threshold	0.5% of Pipe OD (0.10 in/2.5 mm)
Sizing Accuracy (Depth)	0.10 in (2.5 mm)
<b>Location Accuracy</b>	
Axial	±1 in (25 mm) within a joint
Circumferential	±10°
<b>Bend Data</b>	
Angle Accuracy	±2°

**Suggested Minimum Trap Dimensions**

Traps	A	B	C	D	E	F	G	H
<b>Launcher</b>	73 in (1854 mm)	31 in (787 mm)	18 in (457 mm)	22 in (559 mm)	68 in (1727 mm)	133 in (3378 mm)	20 in (508 mm)	6 in (152 mm)
<b>Receiver</b>	73 in (1854 mm)	73 in (1854 mm)	18 in (457 mm)	22 in (559 mm)	68 in (1727 mm)	133 in (3378 mm)	20 in (508 mm)	6 in (152 mm)

**Notes**

- Data quality and run success is dependent on tool speed & line conditions
- Pipelines that are outside of the scope of these specifications can be assessed on an individual basis
- Tool design may vary from image above
- <sup>1</sup>Optional Dynamic Speed Control available
- <sup>2</sup>Contact Enduro for details
- <sup>3</sup>Contact Enduro for options if MCSD is less than shown above



**20" DfL-Combo**