

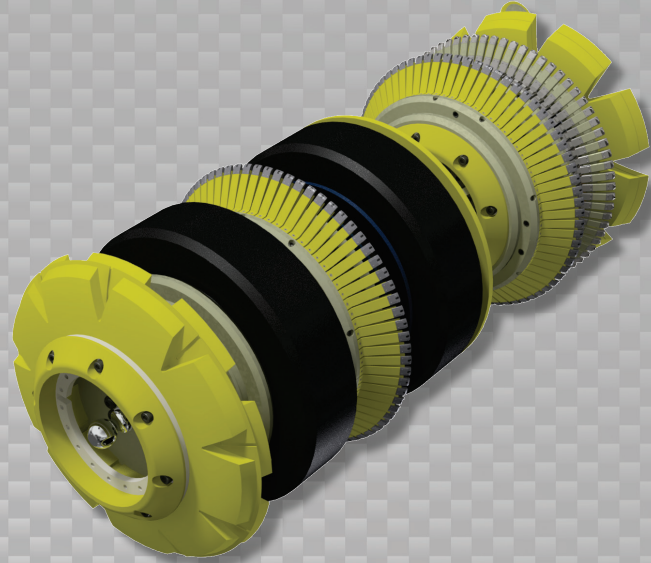


Data Sets (No. of Sensors)

Metal Loss	144
Residual	144
Caliper	72
Odometer	2

Physical Attributes

Length	62 in (1575 mm)
Weight	833 lb (378 kg)



Operational

Maximum Pressure	1500 psi (10342 kPa)
Temperature Range	32° to 140°F (0° to 60°C)
Velocity (Preferred)	0.1 to 9 mph (0.04 to 4 m/s)
Minimum Required Diff. Pressure (Launching)	25 psi (172 kPa)
Minimum Required Diff. Pressure (Running)	20 psi (138 kPa)

Pipeline Geometry Requirements

Local Min. Cross Section Diameter	17.60 in (447 mm)
Feature Bore Restriction Diameter	19.75 in (502 mm)
Minimum Bend Radius	1.5D
Minimum Bend Separation (1.5D Bends)	11 in (279 mm)
Minimum Tee Separation (Centerline to Centerline)	55 in (1397 mm)
Maximum Recordable Wall Thickness [@ 9 mph (4 m/s)]	0.75 in (19 mm)

Reporting

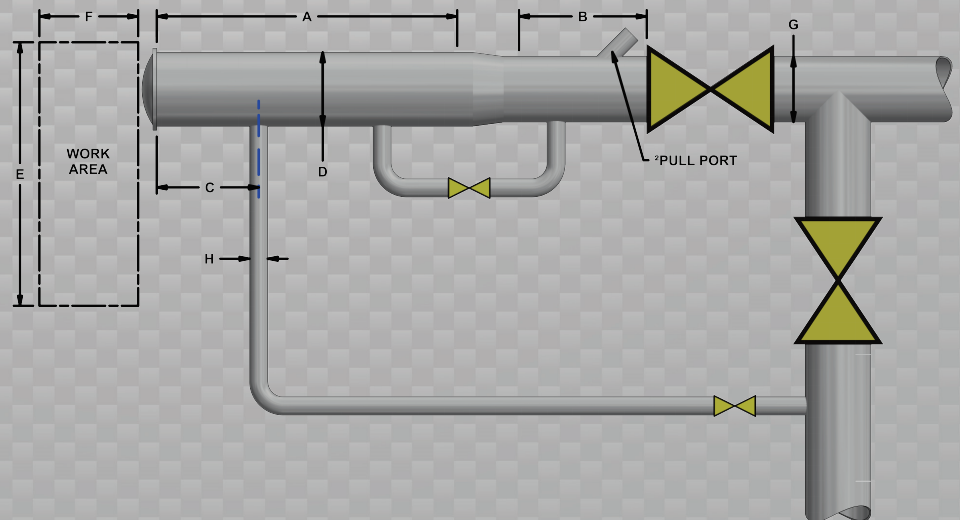
Metal Loss	Refer to Tool Performance Specification
Geometry Data	
Reporting Threshold	0.5% of Pipe OD (0.11 in/2.8 mm)
Sizing Accuracy (Depth)	0.11 in (2.8 mm)
Location Accuracy	
Axial	±1 in (25 mm) within a joint
Circumferential	±10°
Bend Data	
Angle Accuracy	±2°

Suggested Minimum Trap Dimensions

Traps	A	B	C	D	E	F	G	H
Launcher	74 in (1880 mm)	31 in (787 mm)	18 in (457 mm)	24 in (610 mm)	70 in (1778 mm)	134 in (3404 mm)	22 in (559 mm)	6 in (152 mm)
Receiver	74 in (1880 mm)	74 in (1880 mm)	18 in (457 mm)	24 in (610 mm)	70 in (1778 mm)	134 in (3404 mm)	22 in (559 mm)	6 in (152 mm)

Notes

- Data quality and run success is dependent on tool speed & line conditions
- Pipelines that are outside of the scope of these specifications can be assessed on an individual basis
- Tool design may vary from image above
- ²Contact Enduro for details



22" DfL-Combo