

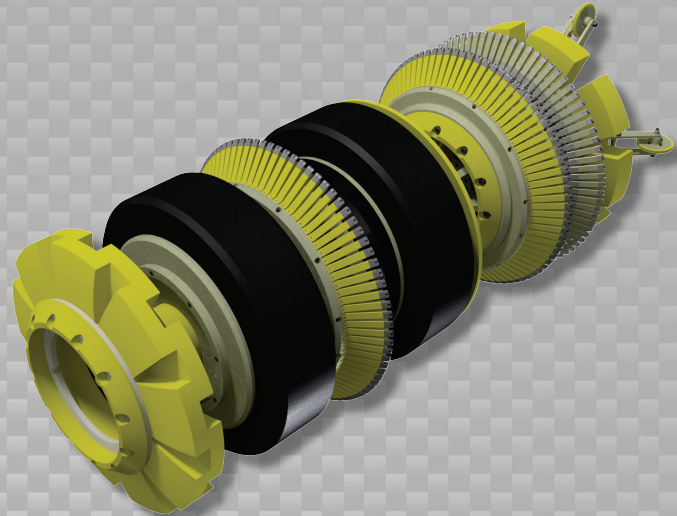


**Data Sets (No. of Sensors)**

Metal Loss	168
Residual	168
Caliper	84
Odometer	2

**Physical Attributes**

Length	73 in (1854 mm)
Weight	1345 lb (610 kg)



**Operational**

Maximum Pressure	1500 psi (10342 kPa)
Temperature Range	32° to 140°F (0° to 60°C)
Velocity (Preferred)	0.1 to 9 mph (0.04 to 4 m/s)
Minimum Required Diff. Pressure (Launching)	25 psi (172 kPa)
Minimum Required Diff. Pressure (Running)	20 psi (138 kPa)

**Pipeline Geometry Requirements**

Local Min. Cross Section Diameter	20.80 in (528 mm)
Feature Bore Restriction Diameter	23.50 in (597 mm)
Minimum Bend Radius	1.5D
Minimum Bend Separation (1.5D Bends)	13 in (330 mm)
Minimum Tee Separation (Centerline to Centerline)	65 in (1651 mm)
Maximum Recordable Wall Thickness [ @ 9 mph (4 m/s) ]	0.75 in (19 mm)

**Reporting**

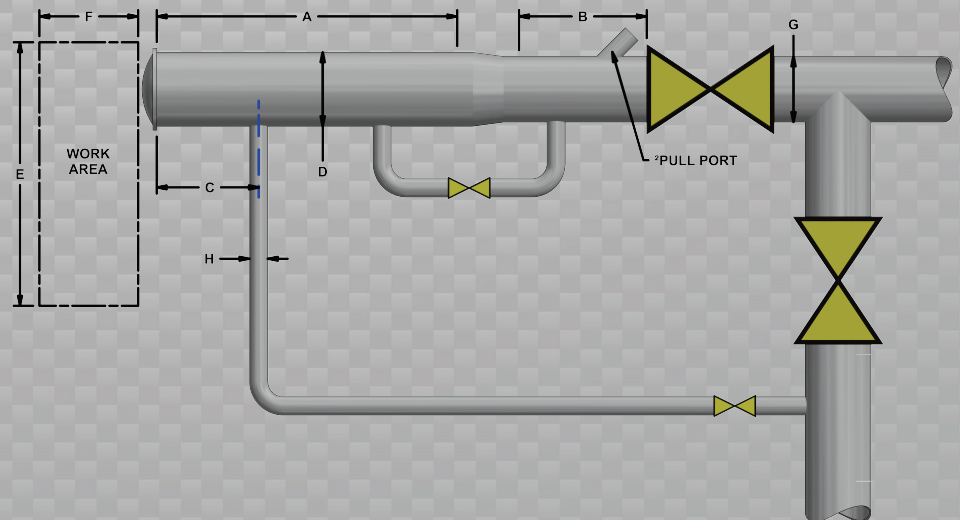
<b>Metal Loss</b>	Refer to Tool Performance Specification
<b>Geometry Data</b>	
Reporting Threshold	0.5% of Pipe OD (0.13 in/3.3 mm)
Sizing Accuracy (Depth)	0.13 in (3.3 mm)
<b>Location Accuracy</b>	
Axial	±1 in (25 mm) within a joint
Circumferential	±10°
<b>Bend Data</b>	
Angle Accuracy	±2°

**Suggested Minimum Trap Dimensions**

Traps	A	B	C	D	E	F	G	H
<b>Launcher</b>	85 in (2159 mm)	37 in (940 mm)	18 in (457 mm)	28 in (711 mm)	74 in (1880 mm)	145 in (3683 mm)	26 in (660 mm)	8 in (203 mm)
<b>Receiver</b>	85 in (2159 mm)	85 in (2159 mm)	18 in (457 mm)	28 in (711 mm)	74 in (1880 mm)	145 in (3683 mm)	26 in (660 mm)	8 in (203 mm)

**Notes**

- Data quality and run success is dependent on tool speed & line conditions
- Pipelines that are outside of the scope of these specifications can be assessed on an individual basis
- Tool design may vary from image above
- <sup>2</sup>Contact Enduro for details



**26" DfL-Combo**