

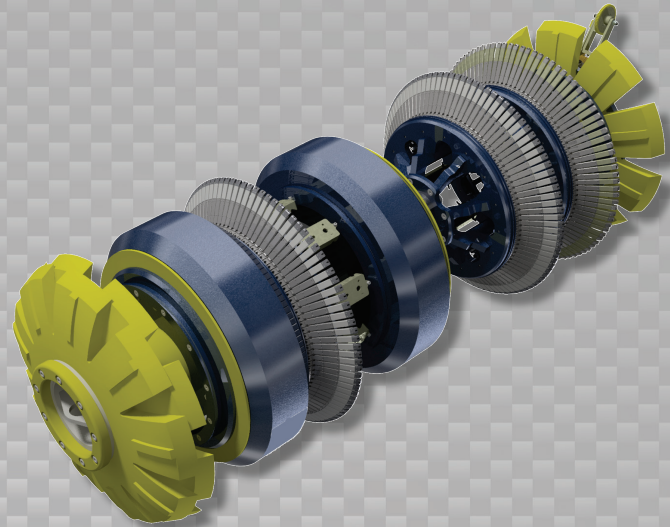


**Data Sets (No. of Sensors)**

Metal Loss	192
Residual	192
Caliper	96
Odometer	2

**Physical Attributes**

Length	86 in (2184 mm)
Weight	1718 lb (779 kg)



**Operational**

Maximum Pressure	1500 psi (10342 kPa)
Temperature Range	32° to 140°F (0° to 60°C)
Velocity (Preferred)	0.1 to 9 mph (0.04 to 4 m/s)
Minimum Required Diff. Pressure (Launching)	25 psi (172 kPa)
Minimum Required Diff. Pressure (Running)	20 psi (138 kPa)

**Pipeline Geometry Requirements**

Local Min. Cross Section Diameter	22.40 in (569 mm)
<sup>1</sup> Feature Bore Restriction Diameter	25.20 in (640 mm)
Minimum Bend Radius	1.5D
Minimum Bend Separation (1.5D Bends)	14 in (356 mm)
Minimum Tee Separation (Centerline to Centerline)	70 in (1778 mm)
Maximum Recordable Wall Thickness [ @ 9 mph (4 m/s) ]	0.75 in (19 mm)

**Reporting**

<b>Metal Loss</b>	Refer to Tool Performance Specification
<b>Geometry Data</b>	
Reporting Threshold	0.5% of Pipe OD (0.14 in/3.6 mm)
Sizing Accuracy (Depth)	0.14 in (3.6 mm)
<b>Location Accuracy</b>	
Axial	±1 in (25 mm) within a joint
Circumferential	±10°
<b>Bend Data</b>	
Angle Accuracy	±2°

**Suggested Minimum Trap Dimensions**

Traps	A	B	C	D	E	F	G	H
<b>Launcher</b>	98 in (2489 mm)	43 in (1092 mm)	18 in (457 mm)	30 in (762 mm)	76 in (1930 mm)	158 in (4013 mm)	28 in (711 mm)	8 in (203 mm)
<b>Receiver</b>	98 in (2489 mm)	98 in (2489 mm)	18 in (457 mm)	30 in (762 mm)	76 in (1930 mm)	158 in (4013 mm)	28 in (711 mm)	8 in (203 mm)

**Notes**

- Data quality and run success is dependent on tool speed & line conditions
- Pipelines that are outside of the scope of these specifications can be assessed on an individual basis
- Tool design may vary from image above
- <sup>1</sup>Contact Enduro for options if MCSD is less than shown above
- <sup>2</sup>Contact Enduro for details

