

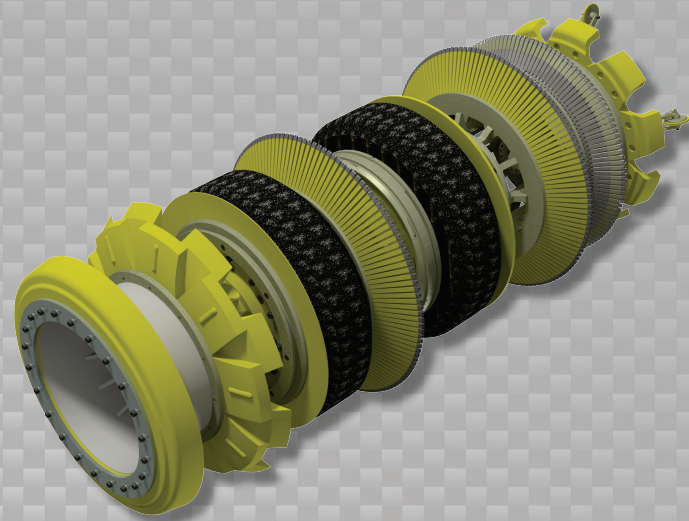


Data Sets (No. of Sensors)

Metal Loss	264
Residual	264
Caliper	132
Odometer	2

Physical Attributes

Length	106 in (2692 mm)
Weight	3583 lb (1625 kg)



Operational

Maximum Pressure	1500 psi (10342 kPa)
Temperature Range	32° to 140°F (0° to 60°C)
¹ Velocity (Preferred)	0.1 to 9 mph (0.04 to 4 m/s)
Minimum Required Diff. Pressure (Launching)	20 psi (138 kPa)
Minimum Required Diff. Pressure (Running)	10 psi (69 kPa)

Pipeline Geometry Requirements

Local Min. Cross Section Diameter	28.80 in (732 mm)
Feature Bore Restriction Diameter	33.00 in (838 mm)
Minimum Bend Radius	1.5D
Minimum Bend Separation (1.5D Bends)	18 in (457 mm)
Minimum Tee Separation (Centerline to Centerline)	90 in (2286 mm)
Maximum Recordable Wall Thickness [[@] 9 mph (4 m/s)]	0.75 in (19 mm)

Reporting

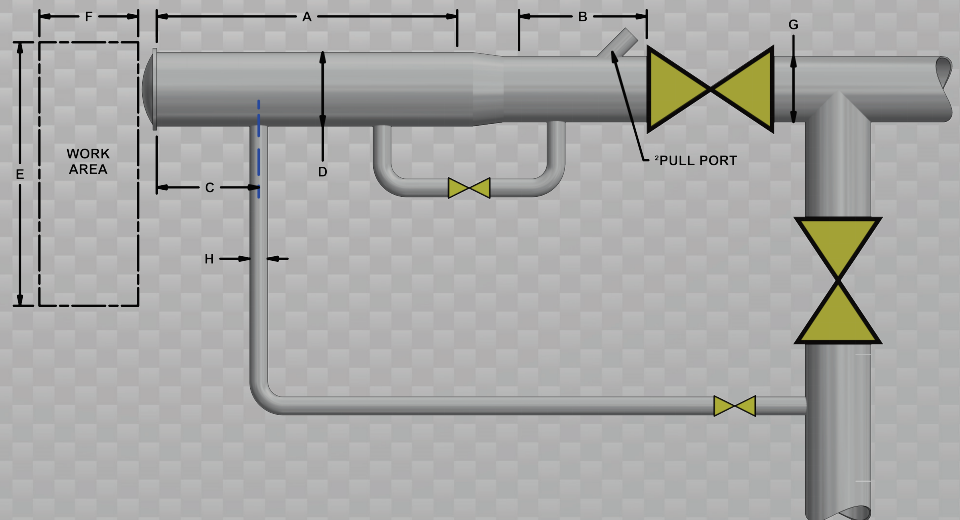
Metal Loss	Refer to Tool Performance Specification
Geometry Data	
Reporting Threshold	0.5% of Pipe OD (0.18 in/4.6 mm)
Sizing Accuracy (Depth)	0.18 in (4.6 mm)
Location Accuracy	
Axial	±1 in (25 mm) within a joint
Circumferential	±10°
Bend Data	
Angle Accuracy	±2°

Suggested Minimum Trap Dimensions

Traps	A	B	C	D	E	F	G	H
Launcher	118 in (2997 mm)	53 in (1346 mm)	18 in (457 mm)	38 in (965 mm)	84 in (2134 mm)	178 in (4521 mm)	36 in (914 mm)	10 in (254 mm)
Receiver	118 in (2997 mm)	118 in (2997 mm)	18 in (457 mm)	38 in (965 mm)	84 in (2134 mm)	178 in (4521 mm)	36 in (914 mm)	10 in (254 mm)

Notes

- Data quality and run success is dependent on tool speed & line conditions
- Pipelines that are outside of the scope of these specifications can be assessed on an individual basis
- Tool design may vary from image above
- ¹Optional Dynamic Speed Control available
- ²Contact Enduro for details



36" DfL-Combo