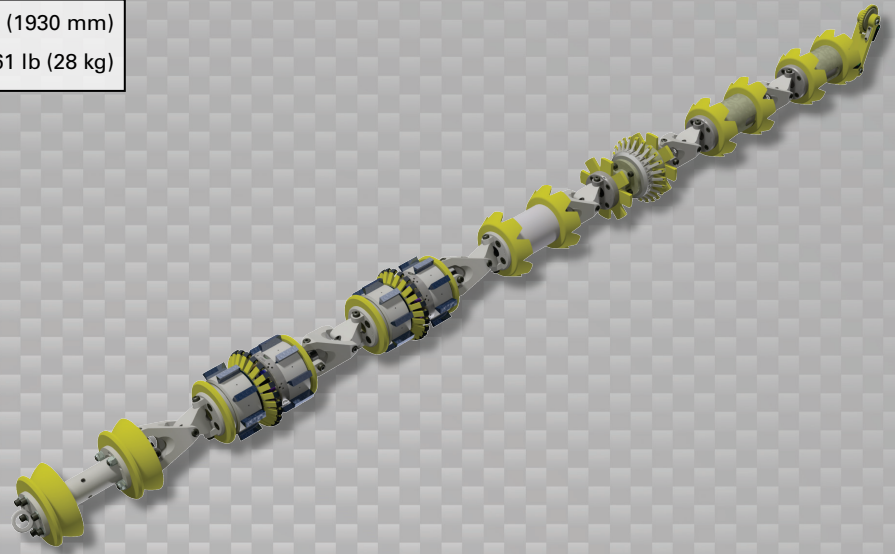


Data Sets (No. of Sensors)

Metal Loss	48
Caliper	24
Odometer	2

Physical Attributes

Length	76 in (1930 mm)
Weight	61 lb (28 kg)



Operational

Maximum Pressure	1500 psi (10342 kPa)
Temperature Range	32° to 140°F (0° to 60°C)
Velocity (Preferred)	0.1 to 9 mph (0.04 to 4 m/s)
Minimum Required Diff. Pressure (Launching)	125 psi (862 kPa)
Minimum Required Diff. Pressure (Running)	80 psi (552 kPa)

Pipeline Geometry Requirements

Local Min. Cross Section Diameter	3.38 in (86 mm)
Feature Bore Restriction Diameter	3.60 in (91 mm)
Minimum Bend Radius	3D [Max WT 0.34 in (8.6 mm)]
Minimum Bend Separation (3D Bends)	9 in (229 mm)
Minimum Tee Separation (Centerline to Centerline)	13 in (330 mm)
Maximum Recordable Wall Thickness [@ 9 mph (4 m/s)]	0.34 in (8.6 mm)

Reporting

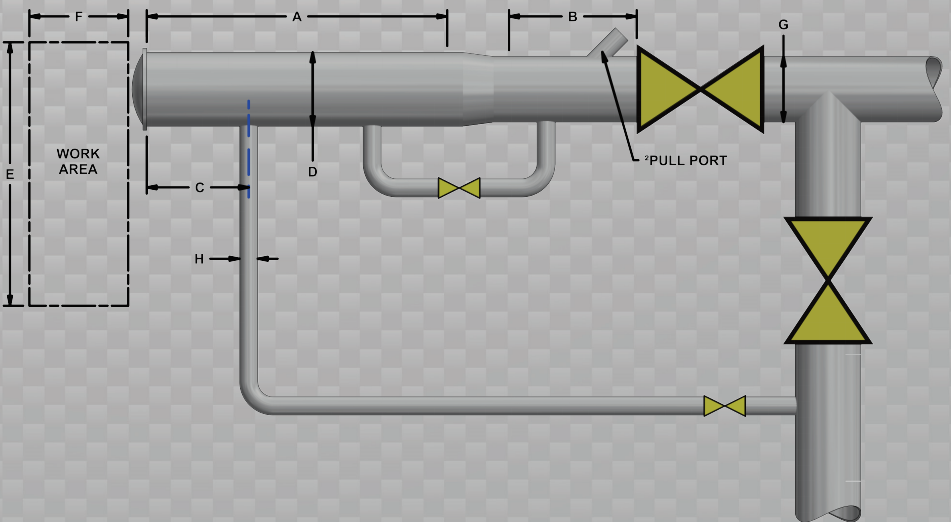
Metal Loss	Refer to Tool Performance Specification
Geometry Data	
Reporting Threshold	0.5% of Pipe OD (0.02 in/0.6 mm)
Sizing Accuracy (Depth)	0.02 in (0.6 mm)
Location Accuracy	
Axial	±1 in (25 mm) within a joint
Circumferential	±10°
Bend Data	
Angle Accuracy	±2°

Suggested Minimum Trap Dimensions

Traps	A	B	C	D	E	F	G	H
Launcher	88 in (2235 mm)	38 in (965 mm)	18 in (457 mm)	6 in (152 mm)	52 in (1321 mm)	148 in (3759 mm)	4 in (102 mm)	2 in (51 mm)
Receiver	88 in (2235 mm)	88 in (2235 mm)	18 in (457 mm)	6 in (152 mm)	52 in (1321 mm)	148 in (3759 mm)	4 in (102 mm)	2 in (51 mm)

Notes

- Data quality and run success is dependent on tool speed & line conditions
- Pipelines that are outside of the scope of these specifications can be assessed on an individual basis
- Tool design may vary from image above
- ²Contact Enduro for details



4" DfL-Combo