

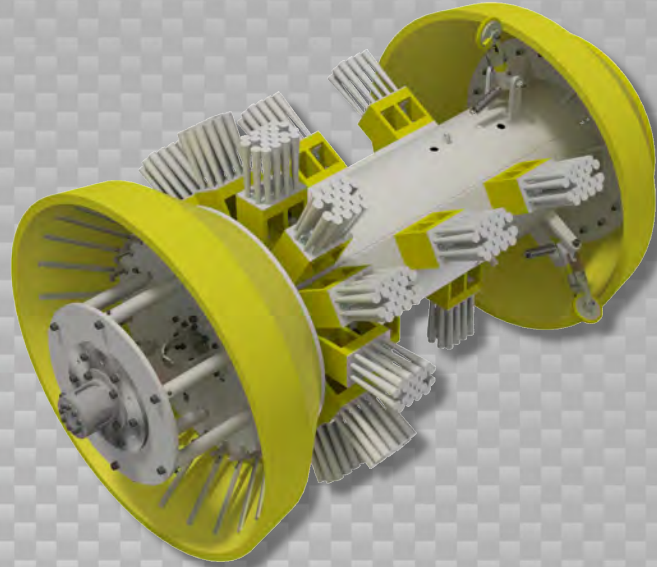


Data Sets (No. of Sensors)

Caliper	24
Odometer	2

Physical Attributes

Length	75 in (1906 mm)
Weight	1289 lb (585 kg)



Operational

Maximum Pressure	1500 psi (10342 kPa)
Temperature Range	32° to 140°F (0° to 60°C)
Velocity (Preferred)	0.1 to 9 mph (0.04 to 4 m/s)
Minimum Required Diff. Pressure (Launching)	20 psi (138 kPa)
Minimum Required Diff. Pressure (Running)	10 psi (69 kPa)

Pipeline Geometry Requirements

Minimum Cross Section Diameter	30.00 in (762 mm)
Minimum Bend Radius	1.5D
Minimum Bend Separation (1.5D Bends)	Back to Back
Minimum Tee Separation (Centerline to Centerline)	100 in (2540 mm)

Reporting

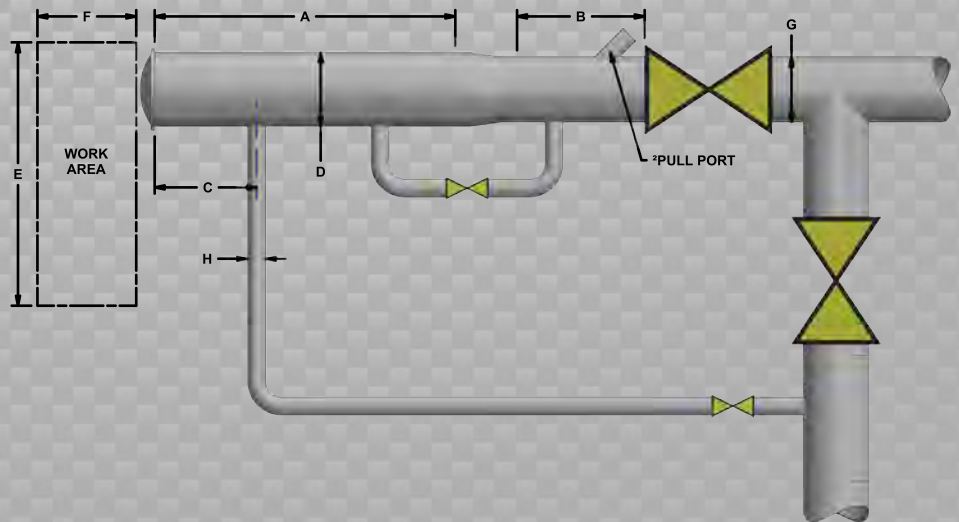
Dent/Ovality Sizing	
Dent Depth Sizing	0.25 in (6.4 mm)
Ovality ID Reduction Accuracy	0.25 in (6.4 mm)
Location Accuracy	
Feature to Upstream Girth Weld	±1 in (25 mm)
Feature Orientation	±15°
Bend Data	
Angle Accuracy	±2°
Axial Sampling	
Depends on Speed, Line Condition & Length	0.1 in (2.5 mm)

Suggested Minimum Trap Dimensions (Contact Enduro For Minimum DfL-Combo Trap Dimensions)

Traps	A	B	C	D	E	F	G	H
Launcher	87 in (2210 mm)	38 in (965 mm)	18 in (457 mm)	42 in (1067 mm)	88 in (2235 mm)	147 in (3734 mm)	40 in (1016 mm)	10 in (254 mm)
Receiver	87 in (2210 mm)	87 in (2210 mm)	18 in (457 mm)	42 in (1067 mm)	88 in (2235 mm)	147 in (3734 mm)	40 in (1016 mm)	10 in (254 mm)

Notes

- Data quality and run success is dependent on tool speed & line conditions
- Pipelines that are outside of the scope of these specifications can be assessed on an individual basis
- Tool design may vary from image above
- ²Contact Enduro for details



40" DdL