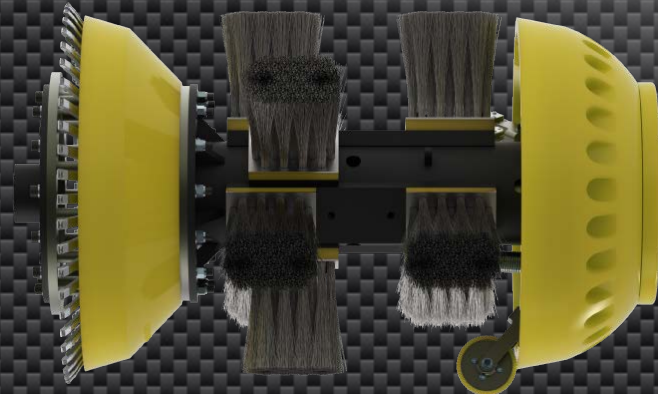
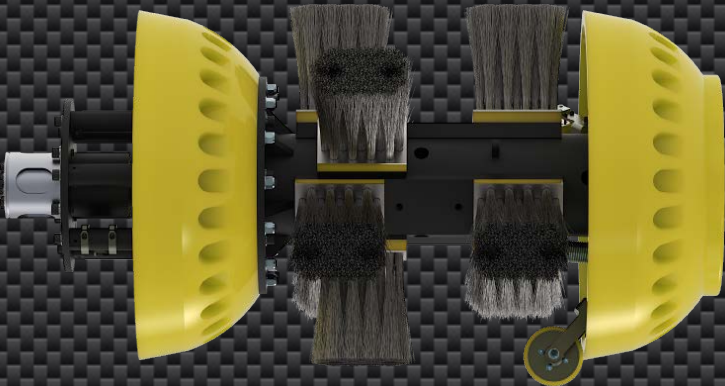




Premier Caliper and Deformation Solutions

DdL

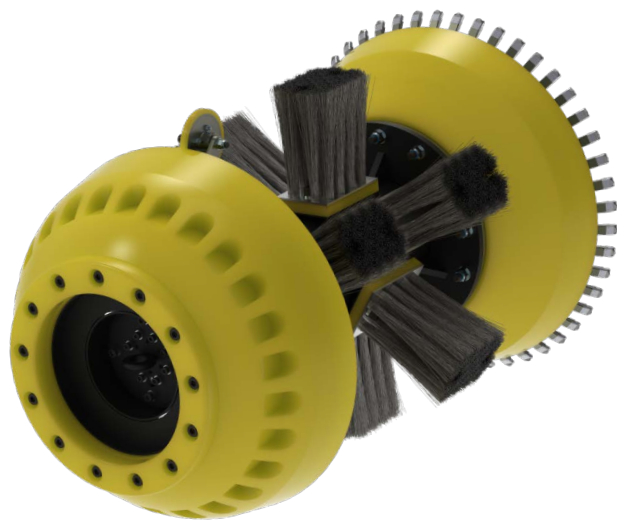
DdL - DW2



Premier Advantages >>



DdL



DdL - DW2

Tool design may vary from images shown.

- ■ New construction
- ■ Go/No-Go functionality prior to corrosion survey
- ■ Ultra rugged / versatile
- ■ Dent, buckle, wrinkle detection
- ■ Pipeline expansion detection
- ■ Bend Stress Analysis
- ■ XYZ mapping in field from GPS weld as-builts*
- ■ Correlation reports*
- ■ 12-24 hr Data analysis field reporting
 - 100% true circumferential coverage
 - Precise buckle and wrinkle measurement
 - High resolution sensors / Direct Wall
- ■ GPS on every pipeline listing event
- ■ KMZ file field reporting package
- ■ Dent Strain analysis
- ■ Inertial Navigation System options (INS)
 - 0.100 inch (2.54 mm) axial resolution
- ■ High Def LN200 navigation package available for maximum resolution - where required
 - Techless (10" to 48")

*Contractor supplies weld GPS from survey.

