

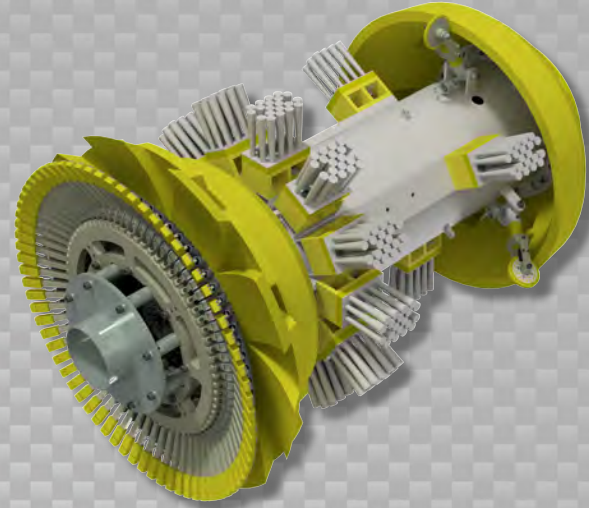


Data Sets (No. of Sensors)

Caliper	72
Spacing: ≤1.5 in (38 mm) in 0.25 in (6.4 mm) WT	
Odometer	2

Physical Attributes

Length	66 in (1677 mm)
Weight	1045 lb (474 kg)



Operational

Maximum Pressure	1500 psi (10342 kPa)
Temperature Range	14° to 149°F (-10° to 65°C)
¹ Velocity (Preferred)	0.1 to 9 mph (0.04 to 4 m/s)
Minimum Required Diff. Pressure (Launching)	20 psi (138 kPa)
Minimum Required Diff. Pressure (Running)	10 psi (69 kPa)

Pipeline Geometry Requirements

Minimum Cross Section Diameter	27.00 in (686 mm)
Minimum Bend Radius	1.5D
Minimum Bend Separation (1.5D Bends)	Back to Back
Minimum Tee Separation (Centerline to Centerline)	90 in (2286 mm)

Reporting (90% Certainty U.N.O.)

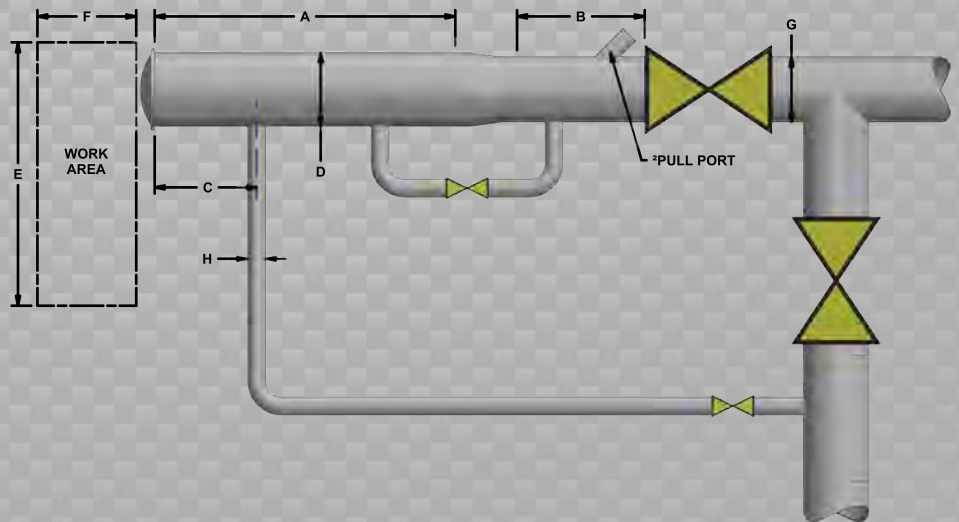
Dents/Ovalities	
Depth Sizing Accuracy	±0.18 in (4.6 mm)
General	
ID Reduction Accuracy	±0.10 in (2.5 mm)
Location Accuracy	
Feature to Upstream Girth Weld	±1 in (25 mm)
Feature Orientation	±5°
Bend Data	
Angle Accuracy	±2°
Axial Sampling	0.1 in (2.5 mm)

Suggested Minimum Trap Dimensions (Contact Enduro For Minimum DfL-Combo Trap Dimensions)

Traps	A	B	C	D	E	F	G	H
Launcher	78 in (1981 mm)	33 in (838 mm)	18 in (457 mm)	38 in (965 mm)	84 in (2134 mm)	138 in (3505 mm)	36 in (914 mm)	10 in (254 mm)
Receiver	78 in (1981 mm)	78 in (1981 mm)	18 in (457 mm)	38 in (965 mm)	84 in (2134 mm)	138 in (3505 mm)	36 in (914 mm)	10 in (254 mm)

Notes

- Data quality and run success is dependent on tool speed & line conditions
- Pipelines that are outside of the scope of these specifications can be assessed on an individual basis
- Tool design may vary from image above
- ¹Optional Dynamic Speed Control available
- ²Contact Enduro for details



36" DdL-DW₂