



Data Sets (No. of Sensors)

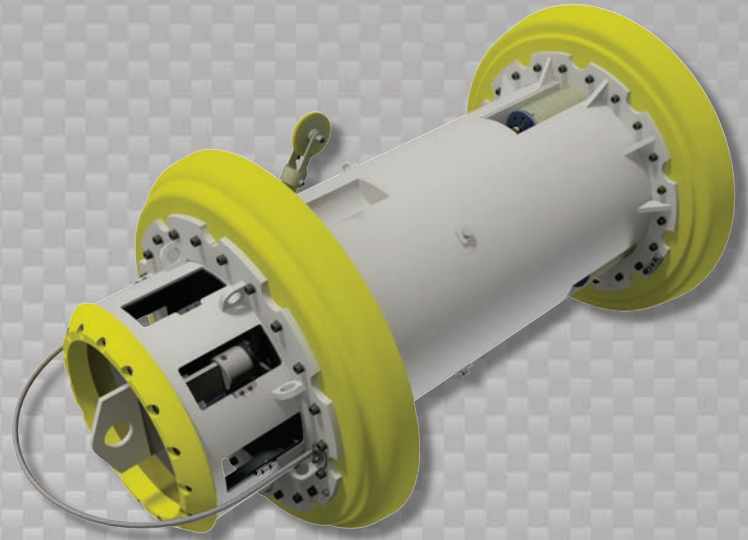
Physical Attributes

Odometer 2

Length 66 in (1677 mm)
Weight 822 lb (373 kg)

Operational

Maximum Pressure	1500 psi (10342 kPa)
Temperature Range	32° to 140°F (0° to 60°C)
¹ Velocity Reduction	~25-40% of Average Pipeline Flow
Minimum Required Diff. Pressure (Launching)	20 psi (138 kPa)
Minimum Required Diff. Pressure (Running)	15 psi (103 kPa)
Bypass Valve Speed	~40s for full cycle (closed to open)



Pipeline Geometry Requirements

Minimum Cross Section Diameter	28.80 in (732 mm)
Minimum Bend Radius	1.5D
Minimum Bend Separation (1.5D Bends)	18 in (457 mm)
Minimum Tee Separation (Centerline to Centerline)	90 in (2286 mm)

Tool Description

Enduro's Dynamic Speed Control technology allows the inspection, gauging or cleaning of pipelines at reduced velocities, typically without lowering product flow rates. A variable bypass module dynamically regulates the amount of product through-flow – allowing the tool to maintain consistent speeds throughout the pipeline. Available to be used in conjunction with Enduro's full line of pipeline pigs, including:

- MFL – DfL™
- Caliper – DdL™
- Cleaning
- Gauging

Notes

- Data quality and run success is dependent on tool speed & line conditions
- Pipelines that are outside of the scope of these specifications can be assessed on an individual basis
- Tool design may vary from image above
- ¹Velocity reduction dependent on line conditions, towing tool type & product composition